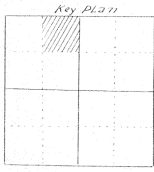
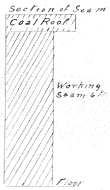
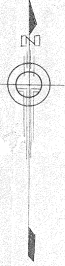


Banner Coal Co. Mine
 Operated by Hoffeson and Ulrich on C. R. Coal Lease Mine
 comprising L.S. 14 Sec. 35-1 & West Mer. Surveyed Aug. 18 1937
 Scale 1 inch=100 feet

Robt. J. Lee, R.R.C.

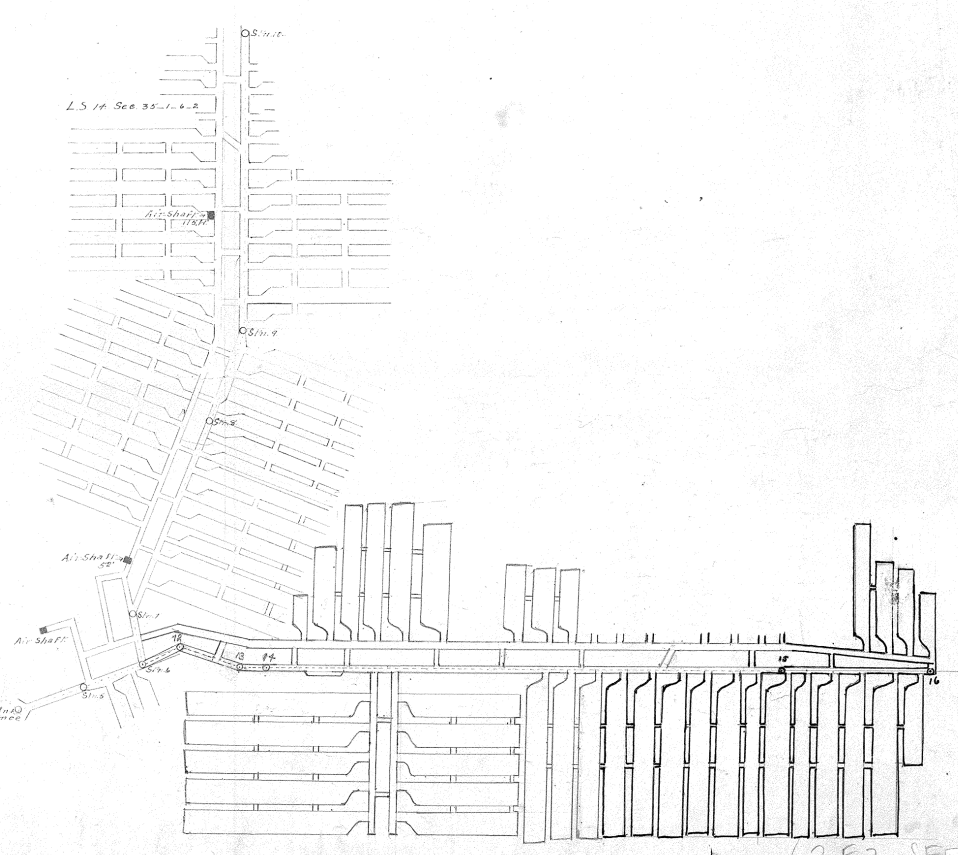


OSm. 2



OSm. 1

Station	Distance	Bearing	Remarks
1-2	145.0'	S. 56° 15' E.	MINE CORNER
2-3	234.0'	S. 42° 15' E.	Sec. 34 1 & 2
3-4	400.0'	S. 56° 15' E.	
4-5	400.0'	N. 71° 20' E.	
5-6	80.0'	N. 82° 00' E.	
6-7	48.0'	N. 52° 00' W.	
7-8	280.0'	N. 82° 00' E.	
8-9	120.0'	N. 52° 00' W.	
9-10	220.0'	Curve 100.0'	Included
10-11	220.0'	S. 42° 15' E.	OSm. 1 1939
11-12	300.0'	S. 42° 15' E.	
12-13	300.0'	S. 42° 15' E.	
13-14	300.0'	S. 42° 15' E.	
14-15	300.0'	S. 42° 15' E.	Extended Aug 17 1940
15-16	200.0'	S. 42° 15' E.	June 11 1940



62 E2 SE